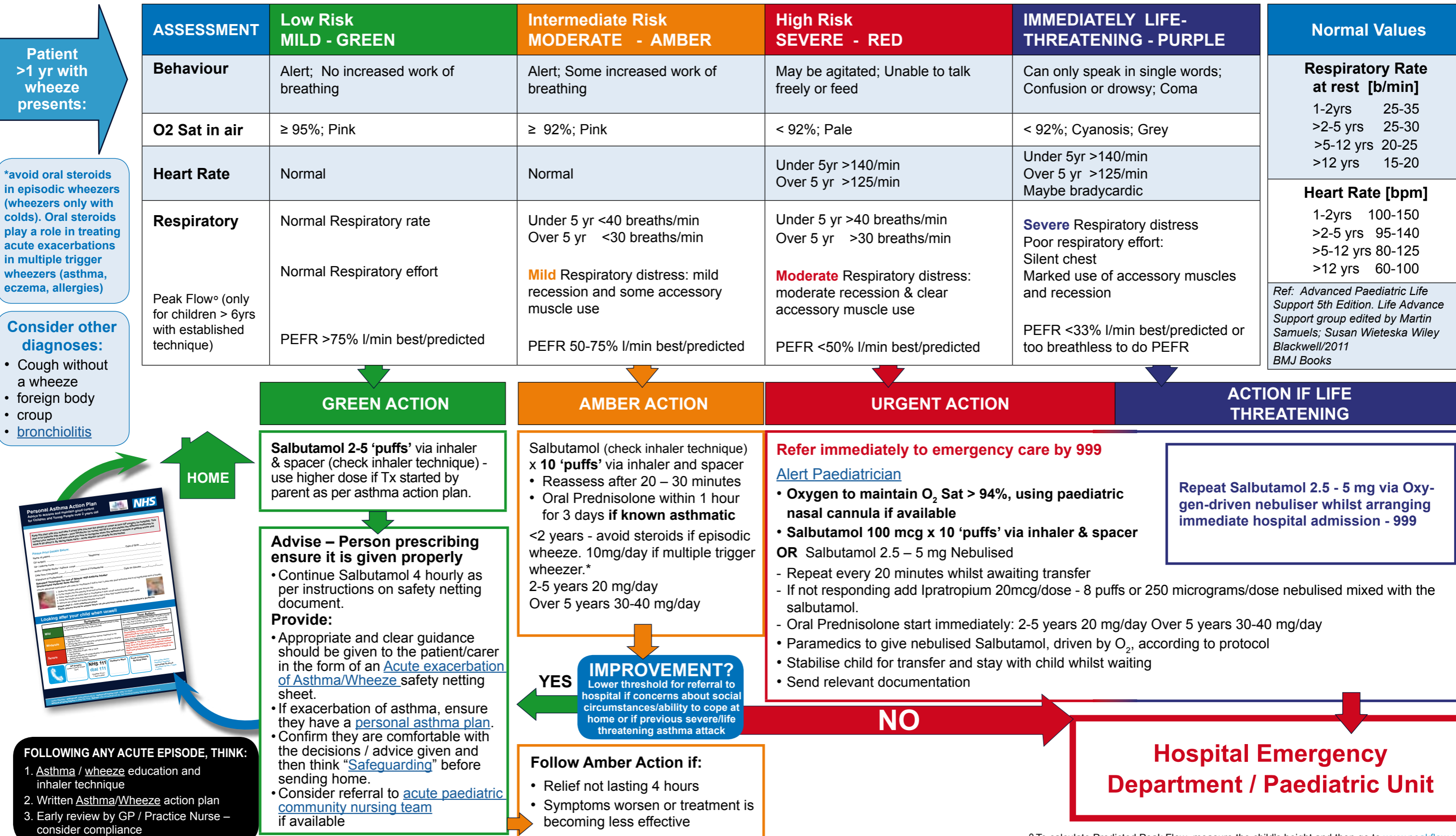


Acute Asthma / Wheeze Pathway (not for Bronchiolitis)

Clinical Assessment / Management Tool for Children & Young People Older than 1 year old with Acute Wheeze



Management – Primary Care and Community Setting



^o To calculate Predicted Peak Flow—measure the child's height and then go to www.peakflow.com

First Draft Version: Oct 2011 • Final Version: May 2016 • Review Date: May 2018

Acute Asthma / Wheeze Pathway (not for Bronchiolitis)

Clinical Assessment / Management Tool for Children & Young People Older than 1 year old with Acute Wheeze



Management – Primary Care and Community Setting

| Glossary of Terms | |
|-------------------|-------------------------------------|
| ABC | Airways, Breathing, Circulation |
| APLS | Advanced Paediatric Life Support |
| AVPU | Alert Voice Pain Unresponsive |
| B/P | Blood Pressure |
| CPD | Continuous Professional Development |
| CRT | Capillary Refill Time |
| ED | Hospital Emergency Department |
| GCS | Glasgow Coma Scale |
| HR | Heart Rate |
| MOI | Mechanism of Injury |
| PEWS | Paediatric Early Warning Score |
| RR | Respiratory Rate |
| WBC | White Blood Cell Count |